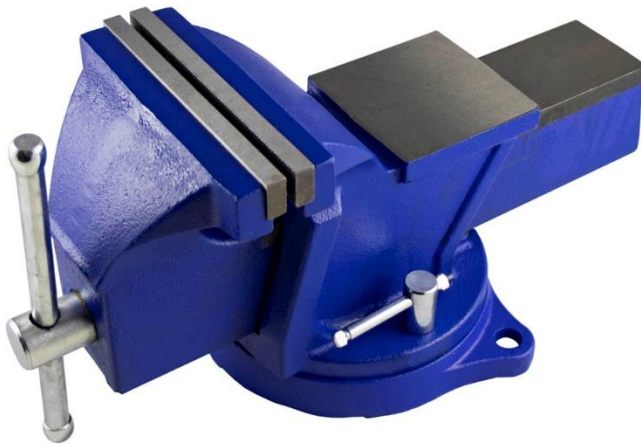


ref. 53032

## 6" ROTATING BASE BENCH VISE



### Function

This rotating base vise is designed to tighten and clamp various objects.

### Advantages

- ✓ Easy to use
- ✓ Rotating base

### Technical specifications

Material	Gray cast iron
Opening	125 mm
Weight	13.71 kg
Mouth length	150 mm
Rotating base	120°

